

Specifications

WindFree™ 4-Way Cassette HEE R32

- 2-Step Cooling: Fast Cooling & WindFree™ Cooling
- Four-way air supply via independently adjustable blades.
- Blade angle between 34° and 68°; blade width 84 mm.
- Built-in humidity sensor.
- High ceiling mode for heights up to 4.6 m (12.0-14.0 kW), 3.9 m (9.0-10.0 kW), 3.5 m (5.2-7.1 kW).
- Built-in condensation drain pump (750 mmH₂O).

- Operation range from -25°C until 52°C
- Single Wi-Fi kit (optional)
- 100% heating capacity at -15°C
- Base heater as standard
- Inverter PBA self-diagnosis



Indoor Unit		AC052BN4PKG/EU	AC071BN4PKG/EU	AC100BN4PKG/EU	AC120BN4PKG/EU	AC140BN4PKG/EU	
Outdoor Unit - Mono-Phase		AC052BXAPKG/EU	AC071BXAPKG/EU	AC100BXAPKG/EU	AC120BXAPKG/EU	AC140BXAPKG/EU	
Outdoor Unit - Tri-Phase		-	AC071BXAPNG/EU	AC100BXAPNG/EU	AC120BXAPNG/EU	AC140BXAPNG/EU	
Capacity							
Cooling (Min/Nominal/Max)	kW	1.10 / 5.00 / 8.00	2.40 / 7.10 / 10.00	3.80 / 10.00 / 13.50	3.80 / 12.10 / 14.50	4.10 / 13.40 / 17.10	
	Heating @ +7°C (Min/Nominal/Max)	kW	1.10 / 6.00 / 9.50	2.20 / 8.00 / 13.0	2.80 / 11.20 / 20.00	2.80 / 13.20 / 22.50	2.80 / 15.50 / 22.80
	Heating @ -5°C	kW	7.38	11.84	13.78	16.24	19.07
	Heating @ -15°C	kW	6.00	9.20	13.00	14.00	14.50
Performance							
Energy Efficiency Cooling	SEER ²	W/W	8.5, A+++	8.5, A+++	8.0, A++	8.0, A++	8.0, A++
	Power Consumption	kWh/a	206	292	438	-	-
	Pdesignc	kW	5.0	7.1	10	12.1	13.4
	EER	W/W	4.31	4.33	4.26	4.28	4.06
Energy Efficiency Heating	SCOP ²	W/W	4.9, A+	4.8, A+	4.8, A+	4.7, A+	4.7, A+
	Power Consumption	kWh/a	1171	1604	2479	-	-
	Pdesignh (average)	kW	4.1	5.5	8.5	9.5	9.5
	CDP ²	W/W	4.38	4.52	4.44	4.13	3.97
Airflow Rate	Indoor Unit (H/M/L)	m ³ /min	13.5 / 12.7 / 11.8	24.8 / 21.3 / 18.9	34.0 / 28.0 / 22.0	35.2 / 29.2 / 23.2	35.2 / 29.2 / 24.4
Sound Power	Indoor Unit	dB(A)	49	52	61	61	61
	Outdoor Unit	dB(A)	63	64	69	70	70
Sound Pressure	Indoor Unit (H/M/L)	dB(A)	33/31/29	35/32/29	44/39/33	45/40/35	45/41/37
	Outdoor Unit (H/L)	dB(A)	48/47	49/47	50/47	56/54	52/50
Fan/Outdoor Unit	Type		BLDC	BLDC	BLDC	BLDC	BLDC
	Power	W	125	125	125	125	125
	Number of Fans		1	1	2	2	2
Operating Temperature Range	Cooling	°C	-20-52	-20-52	-20-52	-20-52	-20-52
	Heating	°C	-25.0-24.0	-25.0-24.0	-25.0-24.0	-25.0-24.0	-25.0-24.0
Electrical Data							
Power Source	Indoor Unit	Φ, #, V, Hz	1Φ, 2, 220-240 V, 50 Hz	1Φ, 2, 220-240 V, 50 Hz	1Φ, 2, 220-240 V, 50 Hz	1Φ, 2, 220-240 V, 50 Hz	1Φ, 2, 220-240 V, 50 Hz
	Outdoor Unit Mono-Phase	Φ, #, V, Hz	1Φ, 2, 220-240 V, 50 Hz	1Φ, 2, 220-240 V, 50 Hz	1Φ, 2, 220-240 V, 50 Hz	-	-
	Outdoor Unit Tri-Phase	Φ, #, V, Hz	-	3Φ, 4, 380-415 V, 50 Hz	3Φ, 4, 380-415 V, 50 Hz	3Φ, 4, 380-415 V, 50 Hz	3Φ, 4, 380-415 V, 50 Hz
Compressor Type	Outdoor Unit	Type	Twin BLDC Rotary	Twin BLDC Rotary	Twin BLDC Rotary	Twin BLDC Rotary	Twin BLDC Rotary
Power (Min/Nominal/Max)	Cooling	kW	0.24 / 1.16 / 2.90	0.45 / 1.64 / 3.20	0.70 / 2.35 / 3.60	0.70 / 2.83 / 4.30	0.72 / 3.30 / 5.00
	Heating	kW	0.22 / 1.37 / 3.15	0.35 / 1.77 / 4.50	0.56 / 2.52 / 6.40	0.56 / 3.20 / 7.95	0.56 / 3.90 / 8.10
Current Input	Cooling (Min/Std/Max)	A	1.6 / 5.5 / 12.7	2.4 / 7.8 / 14.2	3.8 / 10.8 / 16.0	-	-
	Heating (Min/Std/Max)	A	1.5 / 6.3 / 14.0	2.5 / 8.4 / 19.8	2.9 / 11.4 / 27.9	-	-
	Cooling - Tri-Phase (Min/Std/Max)	A	-	1.0 / 2.9 / 5.2	1.4 / 4.1 / 5.8	1.4 / 4.9 / 6.7	1.7 / 5.2 / 7.9
	Heating - Tri-Phase (Min/Std/Max)	A	-	0.8 / 3.1 / 7.2	1.1 / 4.3 / 9.4	1.1 / 5.4 / 11.7	1.1 / 6.1 / 11.9
Dimensions							
Net Dimensions (W x H x D)	Indoor Unit	mm	840 x 204 x 840	840 x 288 x 840	840 x 288 x 840	840 x 288 x 840	840 x 288 x 840
	Outdoor Unit	mm	880 x 798 x 310	940 x 998 x 330	940 x 1420 x 330	940 x 1420 x 330	940 x 1420 x 330
Net Weight	Indoor Unit	kg	16	21.5	21.5	21.5	21.5
	Outdoor Unit	kg	50	75	100	100	100



Indoor Unit		AC052BN4PKG/EU	AC071BN4PKG/EU	AC100BN4PKG/EU	AC120BN4PKG/EU	AC140BN4PKG/EU	
Outdoor Unit - Mono-Phase		AC052BXAPKG/EU	AC071BXAPKG/EU	AC100BXAPKG/EU	AC120BXAPKG/EU	AC140BXAPKG/EU	
Outdoor Unit - Tri-Phase		-	AC071BXAPNG/EU	AC100BXAPNG/EU	AC120BXAPNG/EU	AC140BXAPNG/EU	
Refrigerant		R32 (contains fluorinated greenhouse gases: GWP = 675)					
Refrigerant	Type	R32 (contains fluorinated greenhouse gases: GWP = 675)					
	Factory Charging	kg	1.7/20 m	2.7/30 m	3.5/30 m	3.5/30 m	3.5/30 m
	Charging Ton equivalent CO ₂	tCO ₂ e	1.15	1.82	2.36	2.36	2.36
	Additional Refrigerant Charging	g/m	30	45	45	45	45
Piping Connections	Liquid Pipe	ø, inch	1/4	3/8	3/8	3/8	3/8
	Gas Pipe	ø, inch	1/2	5/8	5/8	5/8	5/8
Piping Length	Min/Max	m	5 / 50	5 / 55	5 / 85	5 / 85	5 / 85
	Max	m	30	30	30	30	30
Piping Connections	Drain Pipe	ø, mm	VP25 (OD 32, ID 25)	VP25 (OD 32, ID 25)	VP25 (OD 32, ID 25)	VP25 (OD 32, ID 25)	VP25 (OD 32, ID 25)
Others							
Panel	Model Code		PC4NUFMAN	PC4NUFMAN	PC4NUFMAN	PC4NUFMAN	PC4NUFMAN
	Net Dimensions (W x H x D)	mm	950 x 48 x 950	950 x 48 x 950	950 x 48 x 950	950 x 48 x 950	950 x 48 x 950
	Net Weight	kg	6.3	6.3	6.3	6.3	6.3
Accessories	Drain Pump		Included	Included	Included	Included	Included
	Max. Lifting Height/Displacement	mm / litres/h	750/24	750/24	750/24	750/24	750/24

Accessories

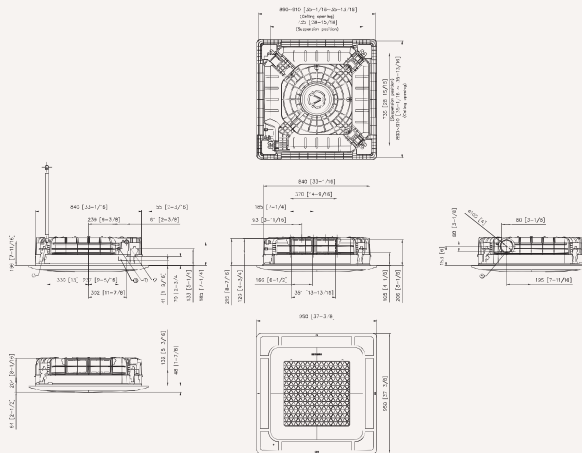
				
Wireless Remote Controller	Simple Type Controller	Touch Controller	Advanced Wired Controller	Touch Centralised Controller
AR-EH04E	MWR-SH00N	MWR-SH11N	MWR-WG00N/MWR-WG00KN	MCM-A300N
				
DMS 2.5	BACnet/Lonworks/PIM	ON/OFF Controller	Wi-Fi Kit	Single WiFi-Kit
MIM-D01AN	MIM-B17BN/B18BN/B1eN	MCM-A202DN	MIM-H04EN	MIM-H14EN
				
Panel (Mandatory)	Air Purification Panel	Auto Elevation Panel	Motion Detect Sensor	External Thermostat
PC4NUFMAN	PC4NUCEAN	PC4NUXMAN	MCR-SMC	MRW-TA

¹ Energy labels as shown are according to EU No 626/2011 (L0110) label classification on 2010, on a scale from D to A+++.

Dimensional drawings

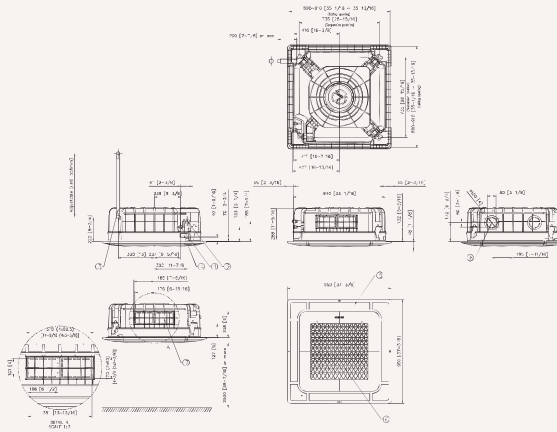
WindFree™ 4-Way Cassette HEE R32

AC052BN4PKG/EU



Commercial Split

NO	Name	Description
1	Liquid pipe connection	Φ6.35(1/4)
2	Gas pipe connection	Φ12.7(1/2)
3	Drain pipe connection	VP-25OD32_ID25
4	Power supply/communication wiring conduits	
5	Sub duct connection	Use M4 Screw
6	Fresh air intake knockout hole	Φ10(4), Use M4 Screw



NO	Name	Description
1	Liquid pipe connection	Ø9.52(3/8)
2	Gas pipe connection	Ø15.88(5/8)
3	Drain pipe connection	VP-25(OD32, ID25)
4	Power supply/communication wiring conduits	
5	Air Outlet Louver	
6	Air Inlet Grille	
7	Sub -duct	* The sub duct is not applicabel to the Wind-free panel
8	Fresh air intake	Ø10[G], Use M4 Screw