

Specifications

WindFree™ 1-Way Cassette FCU

- One-way air supply by means of a 100 mm wide blade
- Cross-flow fan direct driven by a BLDC motor
- Built-in condensation drain pump
- Optional 3-Way valve kit
- Available in WindFree™ function
- Compatible with Wi-Fi Kit controller.



Model		AG026TN1DKH/EU	AG032TN1DKH/EU	AG042TN1DKH/EU		
Power Supply	Φ, V, Hz	1Φ, 220-240 V, 50/60 Hz	1Φ, 220-240 V, 50/60 Hz	1Φ, 220-240 V, 50/60 Hz		
Mode	-	HP	HP	HP		
Performance	Capacity (Nominal)	Cooling	kW	2.60	3.00	4.20
		Heating	kW	2.90	3.40	5.00
Power	Power Input (Nominal)	Cooling	W	27	35	55
		Heating	W	27	35	55
	Current Input (Nominal)	Cooling	A	0.14	0.19	0.29
		Heating	A	0.14	0.19	0.29
Heat Exchanger	Type	-	Fin & tube	Fin & tube	Fin & tube	
Fan	Type	-	Crossflow fan	Crossflow fan	Crossflow fan	
	Number of Fans	ea	1	1	1	
Fan Motor	Airflow Rate	H/M/L	m³/min	6.8/5.8/4.9	7.8/6.8/5.8	14.6/12.6/10.7
	Type	-	BLDC	BLDC	BLDC	
Water	Water Flow Rate	Cooling	L/min	27 x 1	27 x 1	65 x 1
		Heating	L/min	7.5	9.6	11.9
	Pressure Drop	Cooling	kPa	23.0	34.5	45.0
		Heating	kPa	28.0	35.8	64.6
Piping Connections	Liquid Pipe (IN)	Type	PF MALE	PF MALE	PF MALE	
		ø, mm (inch)	20A (3/4")	20A (3/4")	20A (3/4")	
	Liquid Pipe (OUT)	Type	PF MALE	PF MALE	PF MALE	
		ø, mm (inch)	20A (3/4")	20A (3/4")	20A (3/4")	
	Heat Insulation	-	Both inlet/outlet pipes	Both inlet/outlet pipes	Both inlet/outlet pipes	
	Drain Pipe	ø, mm	VP20 (OD 26, ID 20)	VP20 (OD 26, ID 20)	VP25 (OD 32, ID 25)	
Sound	Sound Pressure ¹	(H/M/L)	dB(A)	33/31/29	38/35/31	40/37/33
	Sound Power	Cooling	dB(A)	50	53	59
Dimensions	Net Weight	kg	10.1	10.1	14.0	
	Net Dimensions (W × H × D)	mm	970 × 135 × 410	970 × 135 × 410	1,200 × 138 × 450	
Casing	Material	-	Plastic	Plastic	Plastic	
Panel	Panel Model	-	PC1NWFMBN(WindFree™)	PC1NWFMBN(WindFree™)	PC1BWFMBN(WindFree™)	
Additional Accessories	Drain Pump	Type	Built-in	Built-in	Built-in	
	3-Way Valve Kit (optional)	Max. Lifting Height/Displacement	mm/(cc/min)	750/400	750/400	750/400
		Filter	-	ACL-A60V3	ACL-A60V3	ACL-A60V3

Accessories

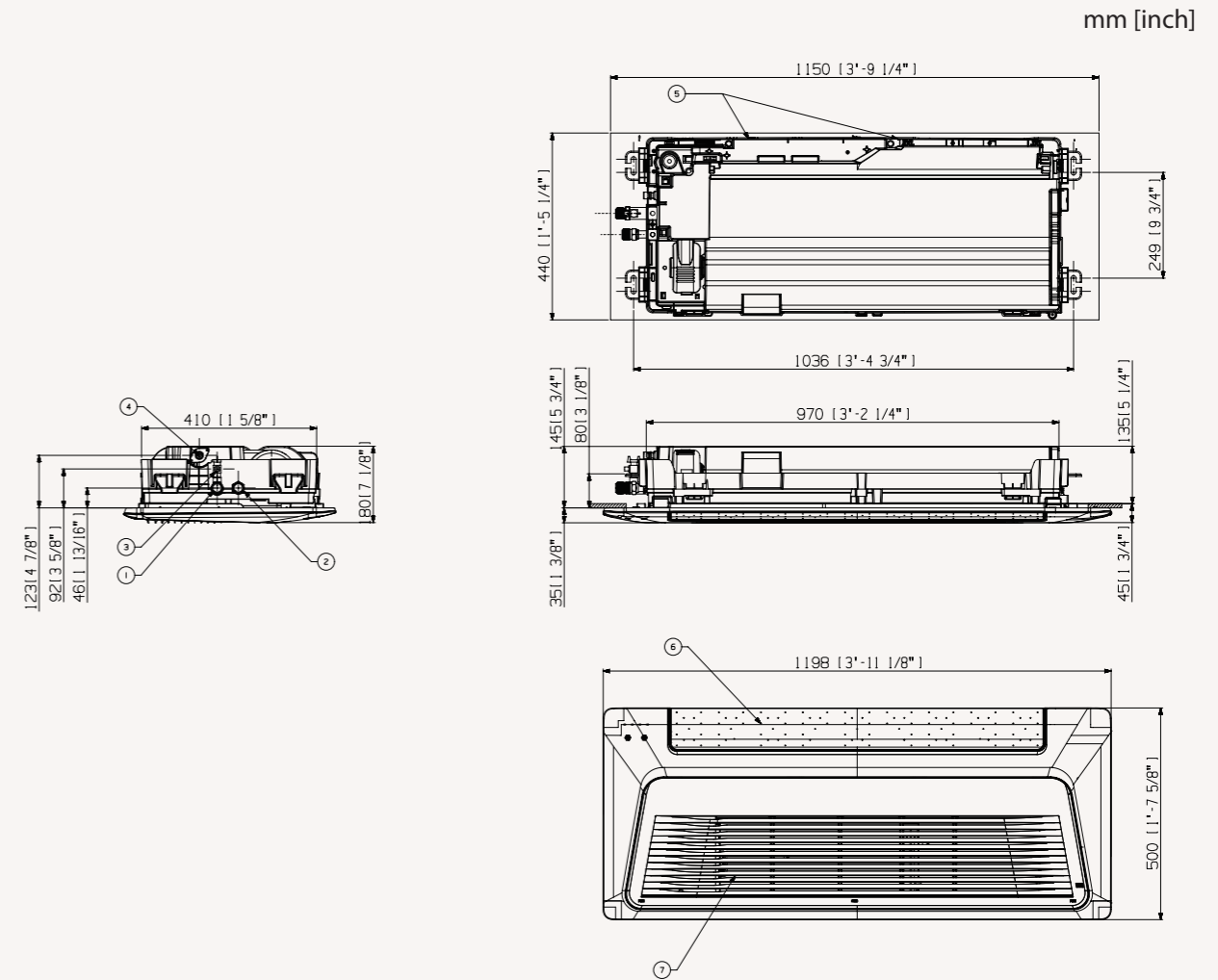


Cooling: Indoor temperature 27 °C DB, 19 °C WB/Water In/Out temperature 7 °C, 12 °C Heating: Indoor temperature 20 °C DB, 15 °C WB/Water In/Out temperature 45 °C, 40 °C. Sound level was acquired in an anechoic room. Thus actual noise level may be different depending on the installation conditions. Specifications may be subject to change without prior notice. Select wire size based on the Minimum Circuit Ampacity (MCA) value.

Dimensional drawings

WindFree™ 1-Way Cassette FCU

AG026/032TN1DKH/EUa

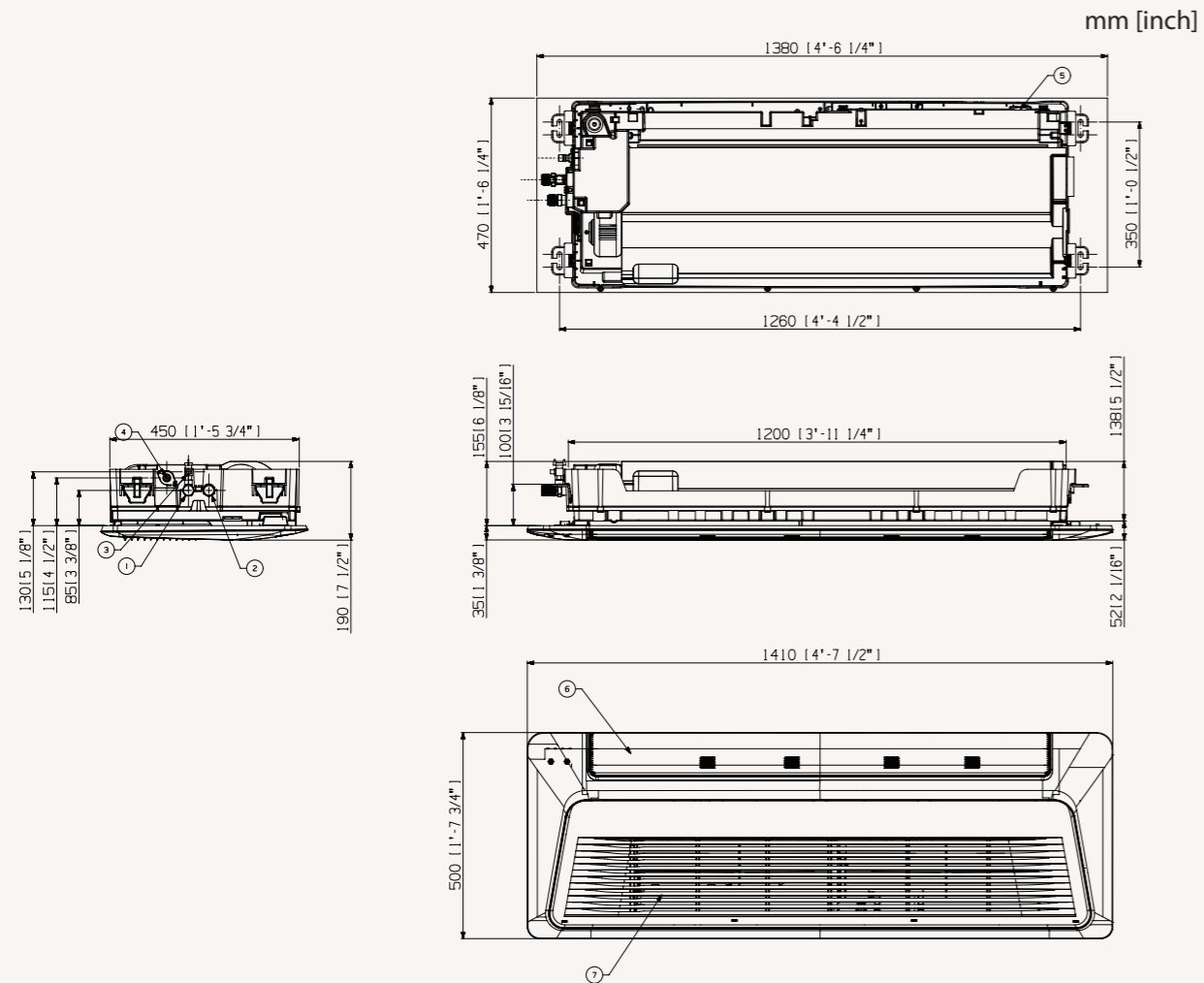


NO	Name	Description
1	Water pipe connection out	PF Male 3/4" (20A)
2	Water pipe connection in	PF Male 3/4" (20A)
3	Air vent valve	
4	Drain hose	VP20 (OD 26, ID 20)
5	Power supply/communication wiring conduits	
6	Air discharge part	
7	Air suction part	

Dimensional drawings

WindFree™ 1-Way Cassette FCU

AG042TN1DKH/EU



NO	Name	Description
1	Water pipe connection out	PF Male 3/4" (20A)
2	Water pipe connection in	PF Male 3/4" (20A)
3	Air vent valve	
4	Drain hose	VP25 (OD 32, ID 25)
5	Power supply/communication wiring conduits	
6	Air discharge part	
7	Air suction part	

