

# Specifications

## WindFree™ 1-Way Cassette

- Fast Cooling mode and WindFree™ Cooling mode.
- One-way air supply by means of a 100 mm wide blade.
- Built-in condensation drain pump and humidity sensor.
- Cross-flow fan direct driven by a BLDC motor.
- Compatible with Wi-Fi Kit controller
- Optional Air Purification Panel



Model			AM017NN1PEH/EU	AM022NN1PEH/EU	AM022NN1DKH/EU	
Power Supply		Φ, #, V, Hz	1Φ, 2, 220-240 V, 50 Hz	1Φ, 2, 220-240 V, 50 Hz	1Φ, 2, 220-240 V, 50 Hz	
Performance	Capacity	Cooling	kW	1.7	2.2	2.2
		Heating	kW	1.9	2.5	2.5
Power	Power Input	Cooling	W	24	25	29
		Heating	W	24	25	29
	Current Input	Cooling	A	0.14	0.15	0.16
		Heating	A	0.14	0.15	0.16
	Current	MCA	A	0.18	0.19	0.20
		MFA	A	15	15	15
Fan	Type	-	Crossflow Fan	Crossflow Fan	Crossflow Fan	
	Number of Fans	ea	1	1	1	
	Airflow Rate	H/M/L	m³/min	4.80/4.30/4.10	5.10/4.60/4.30	6.00/5.00/4.00
		l/s	80.00/71.67/68.33	85.00/76.67/71.67	100.00/83.33/66.67	
Fan Motor	Model	-	BLDC Motor	BLDC Motor	BLDC Motor	
	Output x n	W	27 x 1	27 x 1	27 x 1	
Piping Connections	Liquid Pipe	ø, mm	6.35	6.35	6.35	
		ø, inch	1/4	1/4	1/4	
	Gas Pipe	ø, mm	12.7	12.7	12.70	
		ø, inch	1/2	1/2	1/2	
Drain Pipe	ø, mm	VP20 (OD 25, ID 20)	VP20 (OD 25, ID 20)	VP20 (OD 25, ID 20)		
Wiring Connections	Connection with Indoor	Minimum	mm²	0.75	0.75	0.75
	Remark	-		F1, F2	F1, F2	F1, F2
Refrigerant	Type	-	R410A(Fluorinated greenhouse gas, GWP=2,088)			
	Electronic Expansion Valve	-	EEV INCLUDED	EEV INCLUDED	EEV INCLUDED	
Sound	Sound Pressure <sup>1</sup>	(H/M/L)	dB(A)	28/26/24	29/26/24	29/26/24
	Sound Power	Cooling	dB(A)	46	47	47
Dimension	Net Weight	kg	8.0	8.0	10.0	
	Net Dimensions (W x H x D)	mm	740 x 135 x 360	740 x 135 x 360	970 x 135 x 410	
Panel	Model Name	-	PC1MWFMAN	PC1MWFMAN	PC1NWFMAN	
Drain pump		-	INCLUDED	INCLUDED	INCLUDED	
	Max. Lifting Height/Displacement	mm / litres/h	750/24	750/24	750/24	



	AM028NN1DKH/EU	AM036NN1DKH/EU	AM056NN1DEH/EU	AM071NN1DEH/EU
	1Φ, 2, 220-240 V, 50 Hz	1Φ, 2, 220-240 V, 50 Hz	1Φ, 2, 220-240 V, 50 Hz	1Φ, 2, 220-240 V, 50 Hz
	2.8	3.6	5.6	7.1
	3.2	4.0	6.3	8.0
	32	40	55	80
	32	40	55	80
	0.17	0.20	0.28	0.40
	0.17	0.20	0.28	0.40
	0.21	0.25	0.35	0.50
	15	15	15	15
	Crossflow Fan	Crossflow Fan	Crossflow Fan	Crossflow Fan
	1	1	1	1
	7.00/6.00/5.00	8.00/7.00/6.00	16.00/14.00/12.50	17.00/15.50/14.00
	116.67/100.00/83.33	133.33/116.67/100.00	266.67/233.33/208.33	283.33/258.33/233.33
	BLDC Motor	BLDC Motor	BLDC Motor	BLDC Motor
	27 x 1	27 x 1	54 x 1	54 x 1
	6.35	6.35	6.35	9.52
	1/4	1/4	1/4	3/8
	12.70	12.70	12.7	15.88
	1/2	1/2	1/2	5/8
	VP20 (OD 25, ID 20)	VP20 (OD 25, ID 20)	VP20 (OD 25, ID 20)	VP20 (OD 25, ID 20)
	0.75	0.75	0.75	0.75
	F1, F2	F1, F2	F1, F2	F1, F2
	R410A(Fluorinated greenhouse gas, GWP=2,088)			
	EEV INCLUDED	EEV INCLUDED	EEV INCLUDED	EEV INCLUDED
	32/28/24	37/33/30	41/38/35	42/39/36
	50	55	59	60
	10.0	10.0	13.5	13.5
	970 x 135 x 410	970 x 135 x 410	1,200 x 138 x 450	1,200 x 138 x 450
	PC1NWFMAN	PC1NWFMAN	PC1BWFMAN	PC1BWFMAN
	INCLUDED	INCLUDED	INCLUDED	INCLUDED
	750/24	750/24	750/24	750/24

### Accessories

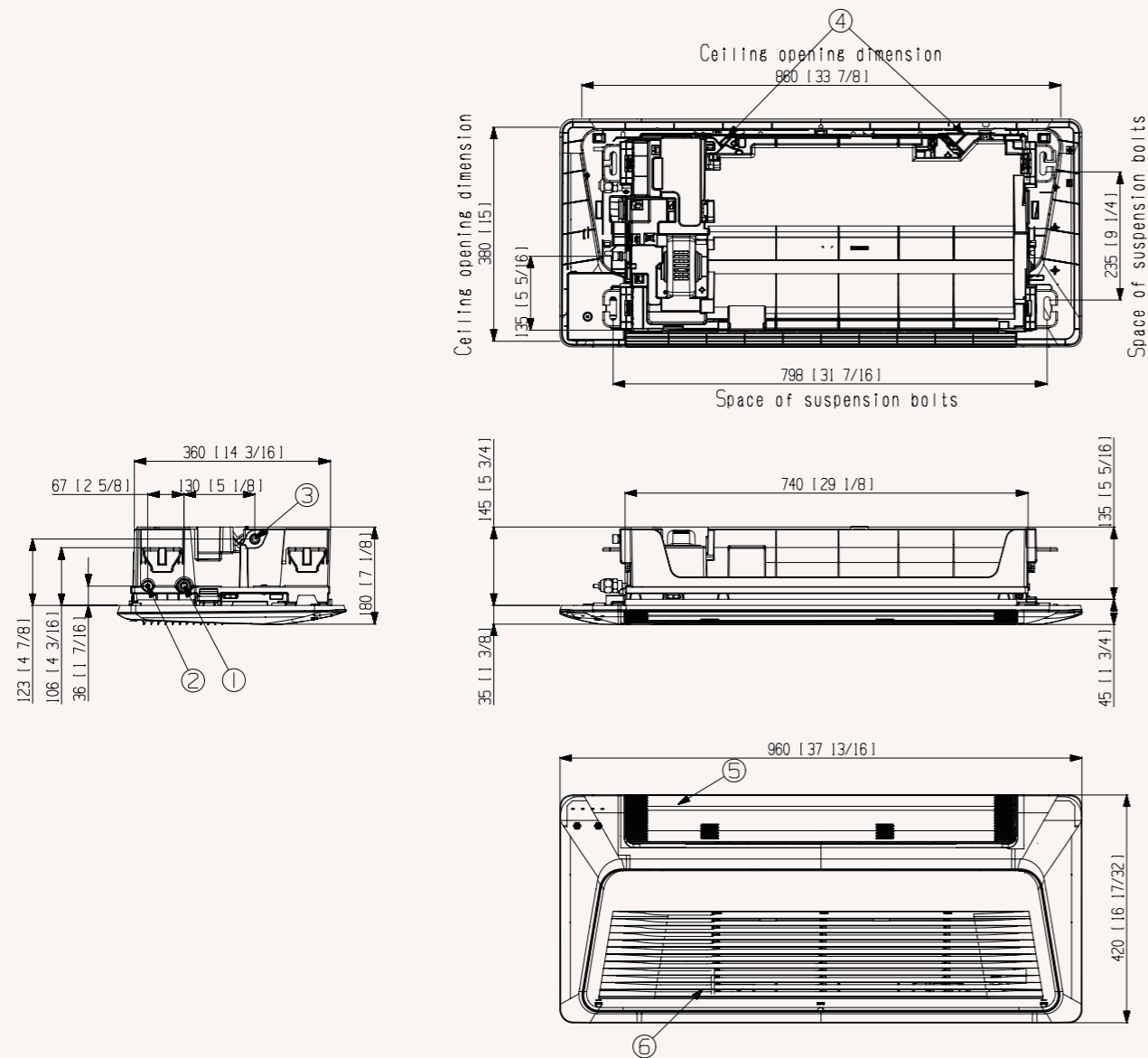
Wireless Remote Controller	Simple Type Controller	Touch Controller	Wired Remote Controller	Wi-Fi Kit	Panel (Mandatory)
AR-EH03E	MWR-SH00N	MWR-SH11N	MWR-WG00*N	MIM-H04EN	PC1*WFMAN
Air Purification Panel (Optional)	External Room Sensor				
PC1*WCMAN	MRW-TA				

<sup>1</sup> Sound pressure level is obtained in an anechoic room. Sound pressure level is a relative value, depending on the distance and acoustic environment. Sound pressure level may differ depending on operation conditions.

# Dimensional drawings

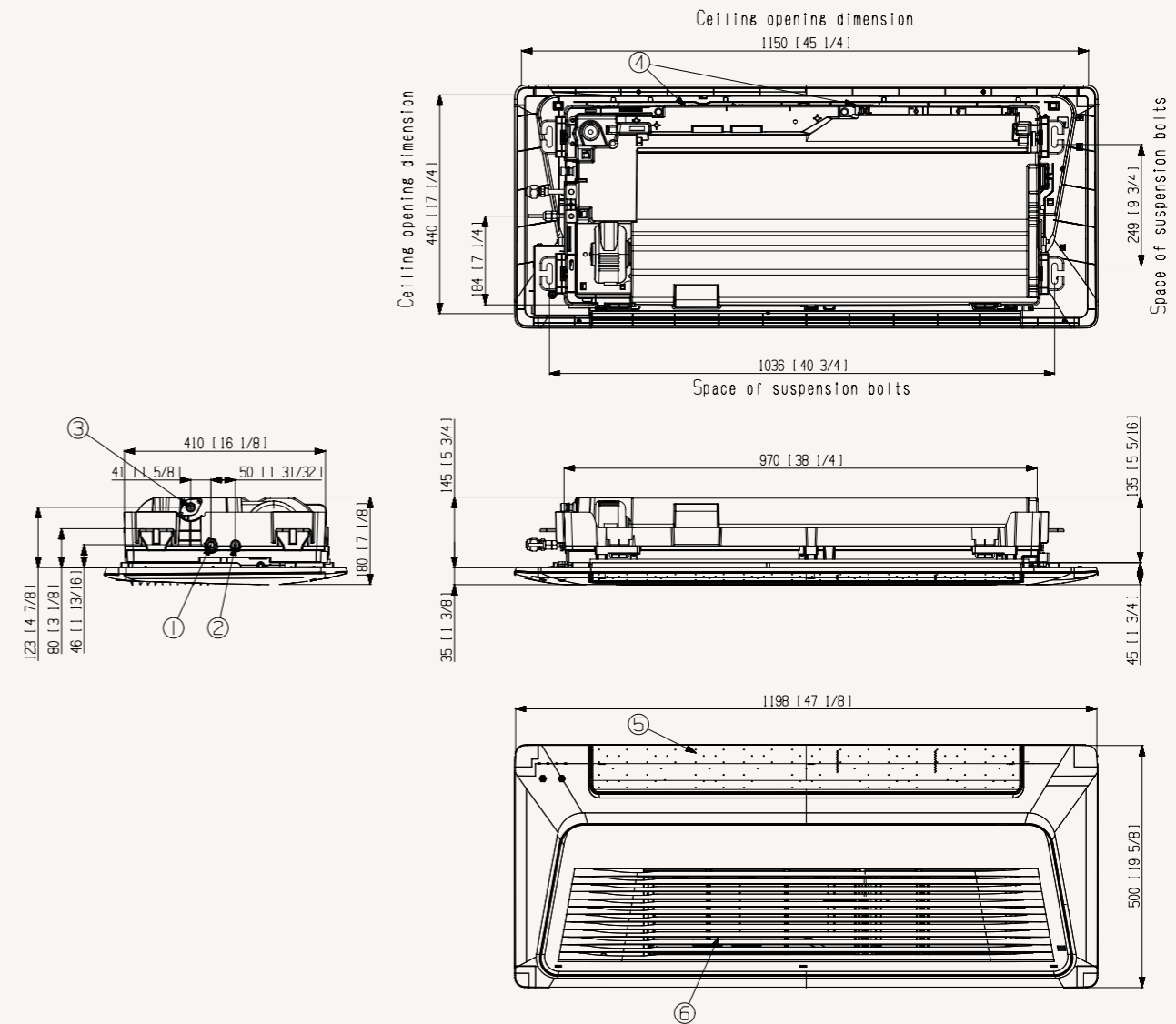
## WindFree™ 1-Way Cassette

AM017/022NN1PEH/EU



NO	Name	Description
1	Gas pipe connection	Ø12.7 (1/2")
2	Liquid pipe connection	Ø6.35 (1/4")
3	Drain hose connection	VP20 (OD26, ID20)
4	Power supply/Communication wiring conduit	-
5	Air outlet louver	-
6	Air inlet grille	-

AM022/028/036NN1DKH/EU

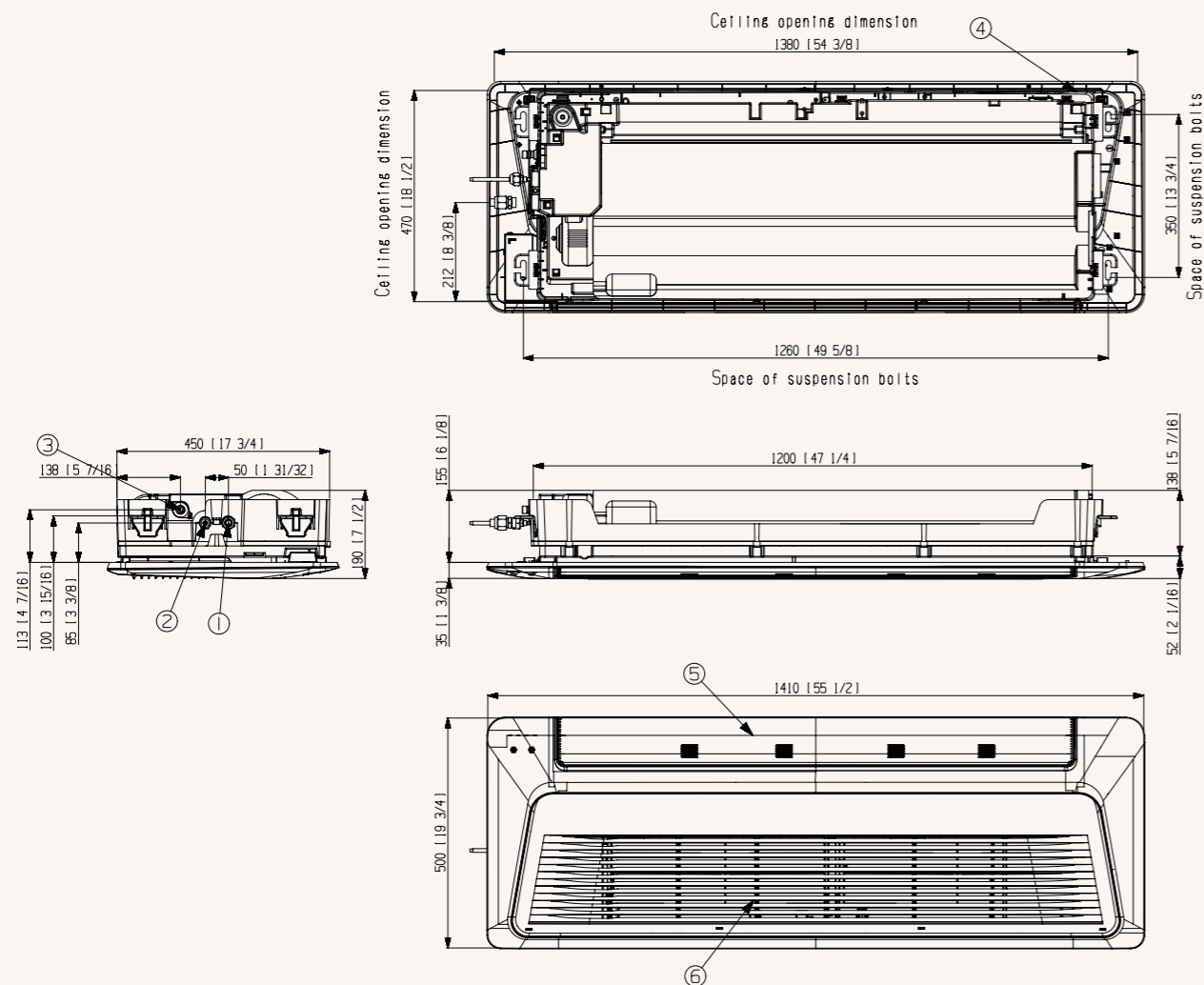


NO	Name	Description
1	Gas pipe connection	Ø12.7 (1/2")
2	Liquid pipe connection	Ø6.35 (1/4")
3	Drain hose connection	VP20 (OD26, ID20)
4	Power supply/Communication wiring conduit	-
5	Air outlet louver	-
6	Air inlet grille	-

# Dimensional drawings

## WindFree™ 1-Way Cassette

AM056/071NN1DEH/EU



NO	Name	Description	
		5.2 kW	7.1 kW
1	Gas pipe connection	Ø12.70 (1/2")	Ø15.88 (5/8")
2	Liquid pipe connection	Ø6.35 (1/4")	Ø9.52 (3/8")
3	Drain hose connection		VP25 (OD32, ID25)
4	Power supply/Communication wiring conduit		-
5	Air outlet louver		-
6	Air inlet grille		-

