

# Specifications

## Concealed Floor-Standing

- Silent operation.
- Sirocco fan driven by inverter motor.
- Compatible with Wi-Fi Kit controller.
- Long-life washable permanent filter.
- Auto Restart function.



Model		AM036FNFDEH/EU	AM056FNFDEH/EU	AM071FNFDEH/EU			
Power Supply	Φ, #, V, Hz	1Φ, 2, 220-240 V, 50 Hz	1Φ, 2, 220-240 V, 50 Hz	1Φ, 2, 220-240 V, 50 Hz			
Performance	Capacity (Nominal)	Cooling kW	3.6	5.6	7.1		
		Heating kW	4.0	6.3	8.0		
Power	Power Input (Nominal)	Cooling W	50	110	110		
		Heating W	50	110	110		
	Current Input (Nominal)	Cooling A	0.24	0.53	0.53		
		Heating A	0.24	0.53	0.53		
Fan	Motor	Sirocco Fan					
	Airflow Rate	H/M/L (UL)	m <sup>3</sup> /min	10.00/8.50/6.00	15.50/14.00/11.00	15.50/14.00/11.00	
Piping Connections	Liquid Pipe	ø, mm	6.35	9.52	9.52		
		ø, inch	1/4	3/8	3/8		
	Gas Pipe	ø, mm	12.70	15.88	15.88		
		ø, inch	1/2	5/8	5/8		
Drain Pipe	ø, mm	ID 18 HOSE					
Field Wiring	Power Source Wire	Below 20 m / over 20 m	mm <sup>2</sup>	1.5/2.5	1.5/2.5	1.5/2.5	
	Transmission Cable		mm <sup>2</sup>	0.75-1.50	0.75-1.50	0.75-1.50	
Refrigerant	Type	R410A (Fluorinated greenhouse gas, GWP=2,088)					
	Control Method	EEV INCLUDED					
Sound	Sound Pressure <sup>1</sup>	(H/M/L)	dB(A)	37/32/27	40/36/32	40/36/32	
Dimensions	Net Weight	kg			23.0	28.5	28.5
	Net Dimensions (W × H × D)	mm			945 × 600 × 220	1,225 × 600 × 220	1,225 × 600 × 220
Air Filter					Long-life Filter	Long-life Filter	Long-life Filter

### Accessories



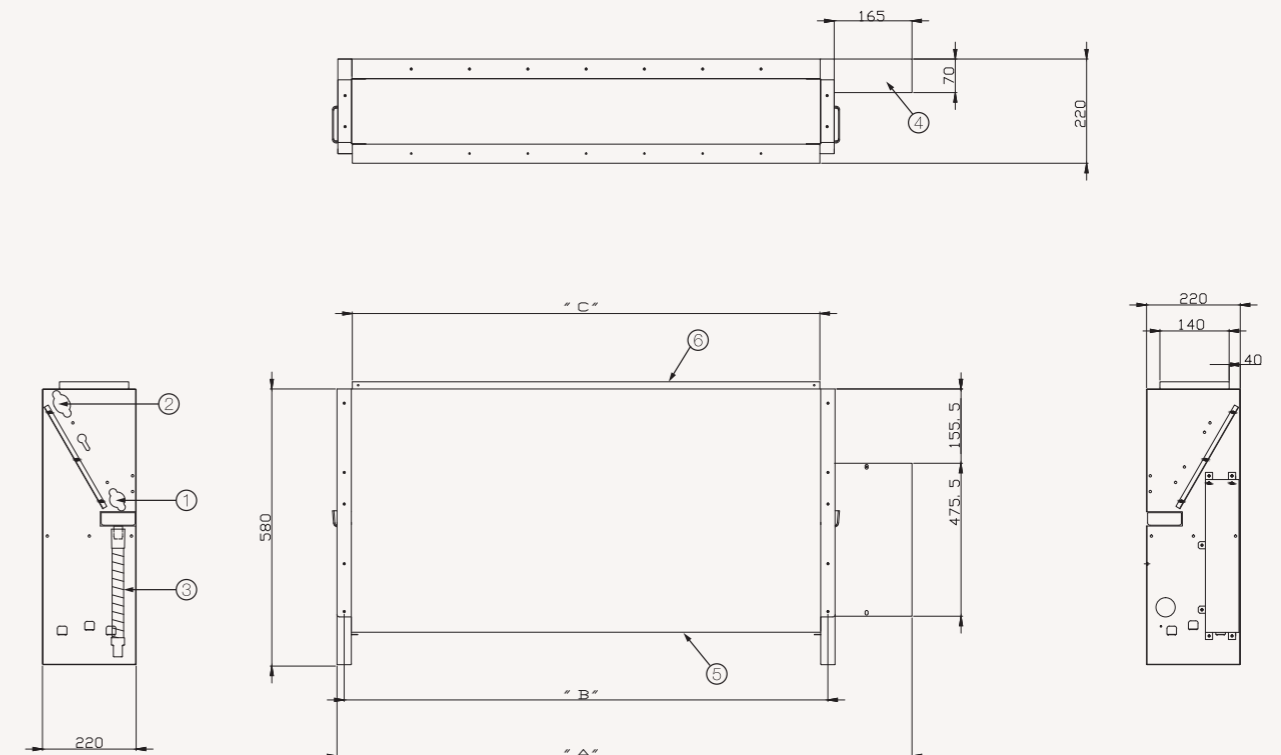
Touch Controller	Wired Remote Controller	Wi-Fi Kit	External Room Sensor
MWR-SH11N	MWR-WG00*N	MIM-H04EN	MRW-TA

<sup>1</sup> Sound pressure level is obtained in an anechoic room. Sound pressure level is a relative value, depending on the distance and acoustic environment. Sound pressure level may differ depending on operation conditions.

# Dimensional drawings

## Concealed Floor-Standing

AM036/056/071FNFDEH/\*\*



Model	A	B	C
AM036FNFDEH/EU	945	730	700
AM056/071FNFDEH/EU	1,225	1,010	980

NO	Name	Description		
		3.6 kW	5.6 kW	7.1 kW
1	Liquid pipe connection	ø6.35 Flare	ø6.35 Flare	ø9.52 Flare
2	Gas pipe connection	ø12.70 Flare	ø12.70 Flare	ø15.88 Flare
3	Drain pipe connection	ID 18 Hose		
4	Power supply/communication wiring conduits			
5	Air inlet grille			
6	Air outlet louvre			